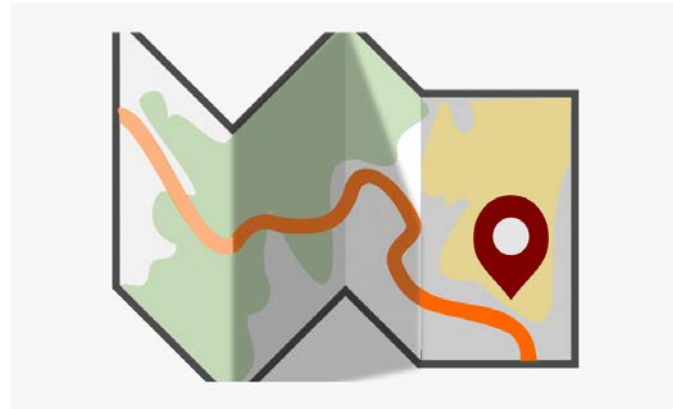


Map Flex Walkthrough



Main Screen



- The telephone number, caller name (if available), address and coordinates will come up here
- When a cell call comes in you need a phase 2 call for the best location. The 'Class' box should say 'WPH2' when it's a phase 2 call. If the class doesn't say WPH2 hit the 'RTX' button to retransmit until your phase 2 comes up

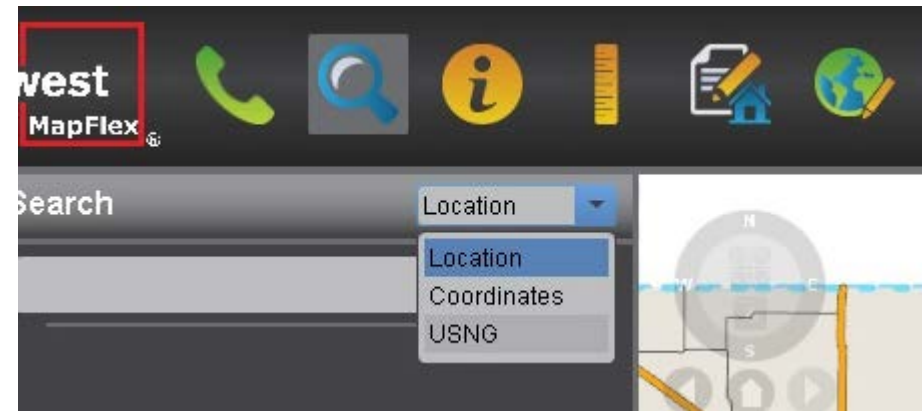
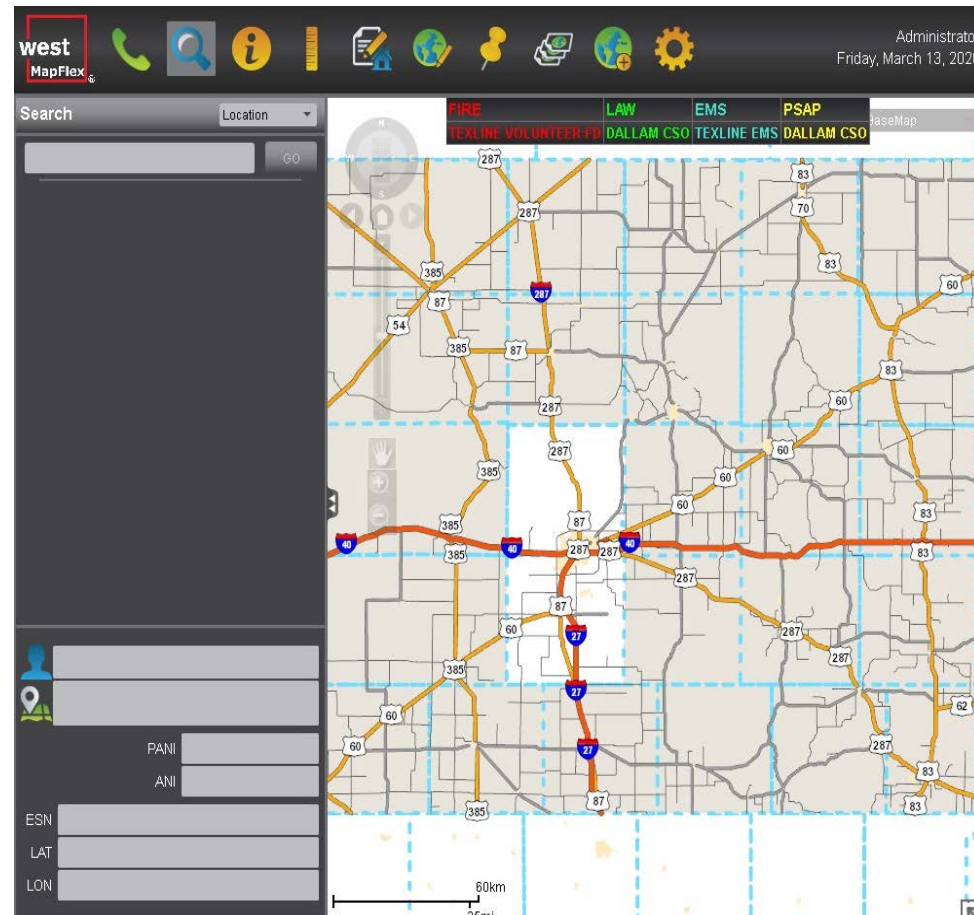
The screenshot displays a dispatch software interface with a dark theme. At the top, there's a navigation bar with icons for home, back, forward, and other functions. Below this is a header area with 'ALI' and 'RTX' buttons. The main area is divided into several sections:

- Call Details:** Fields for 'Tel #', 'Caller', 'Class', 'Mar #', 'Address', 'Exact', 'ESN', 'X Coord', and 'Y Coord'. A red arrow points to the 'Class' field.
- Map:** A central map showing a street grid with various colored overlays (red, green, blue) and labels like 'LAW', 'EMS', 'PSAP'. A red arrow points to the 'RTX' button above the map.
- Released Calls:** A list of released calls with a toggle switch set to 'OFF'.
- Map Controls:** A sidebar with 'PAN', 'ANI', 'ESN', 'LAT', and 'LON' fields.
- Bottom Panel:** A grid of buttons for '911 Transfers' (Donley SO, Roberts SO, Gray SO, Carson SO, Handford SO, Borger PD) and 'Language Line' (904032, Poison, Non-Emergency). There are also 'CONF', 'Transf', and 'Hold' buttons.

Search



- To use the search function click on to the blue magnifying glass
- Type in the address (or partial) you want to search for
- EX: '100 Main St.' will return all 100 Main St. in the Panhandle

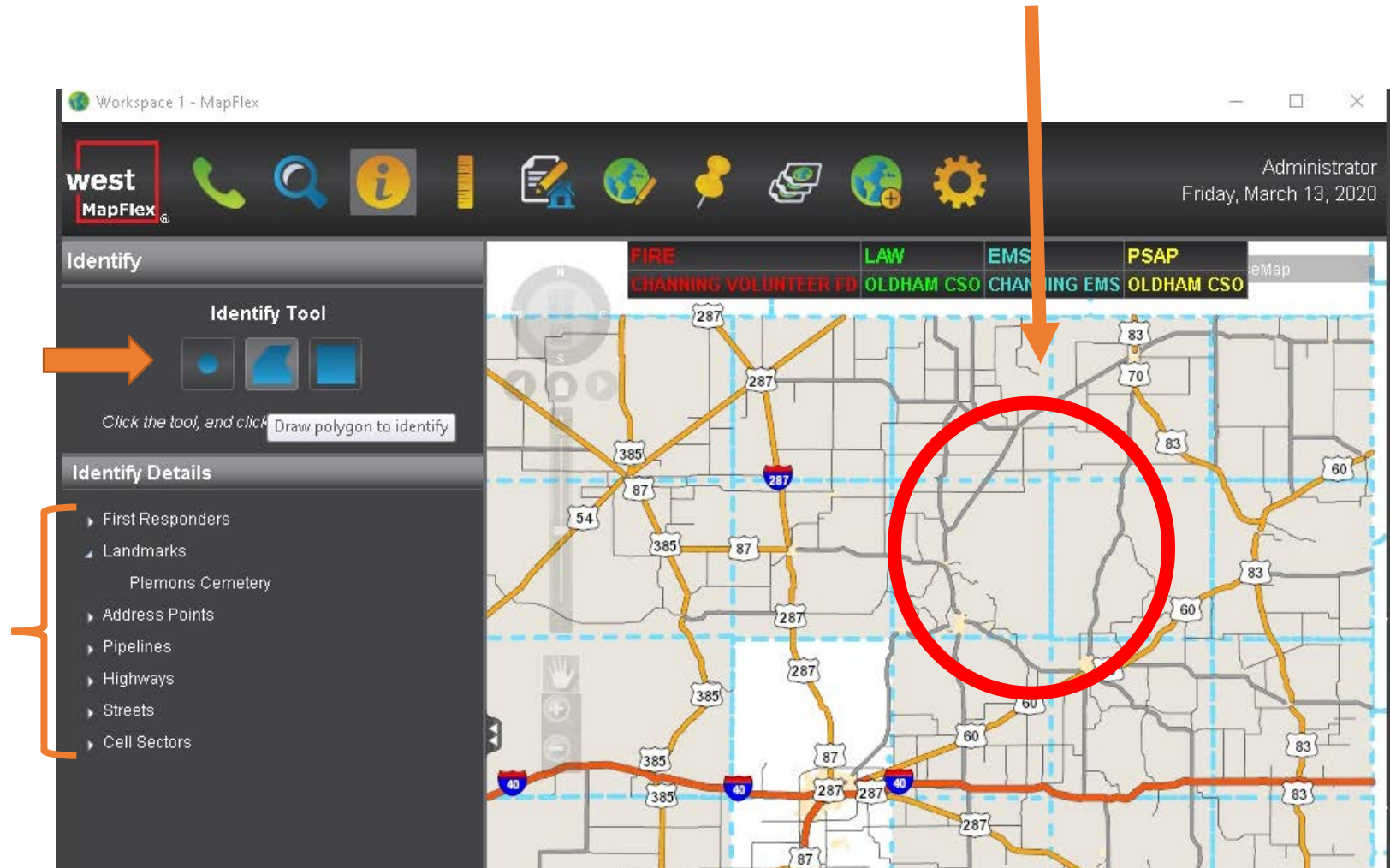


- Use the drop down box to search by coordinates
- Enter you latitude and longitude
- REMEMBER: negative sign should be on longitude (bigger number)

Identify



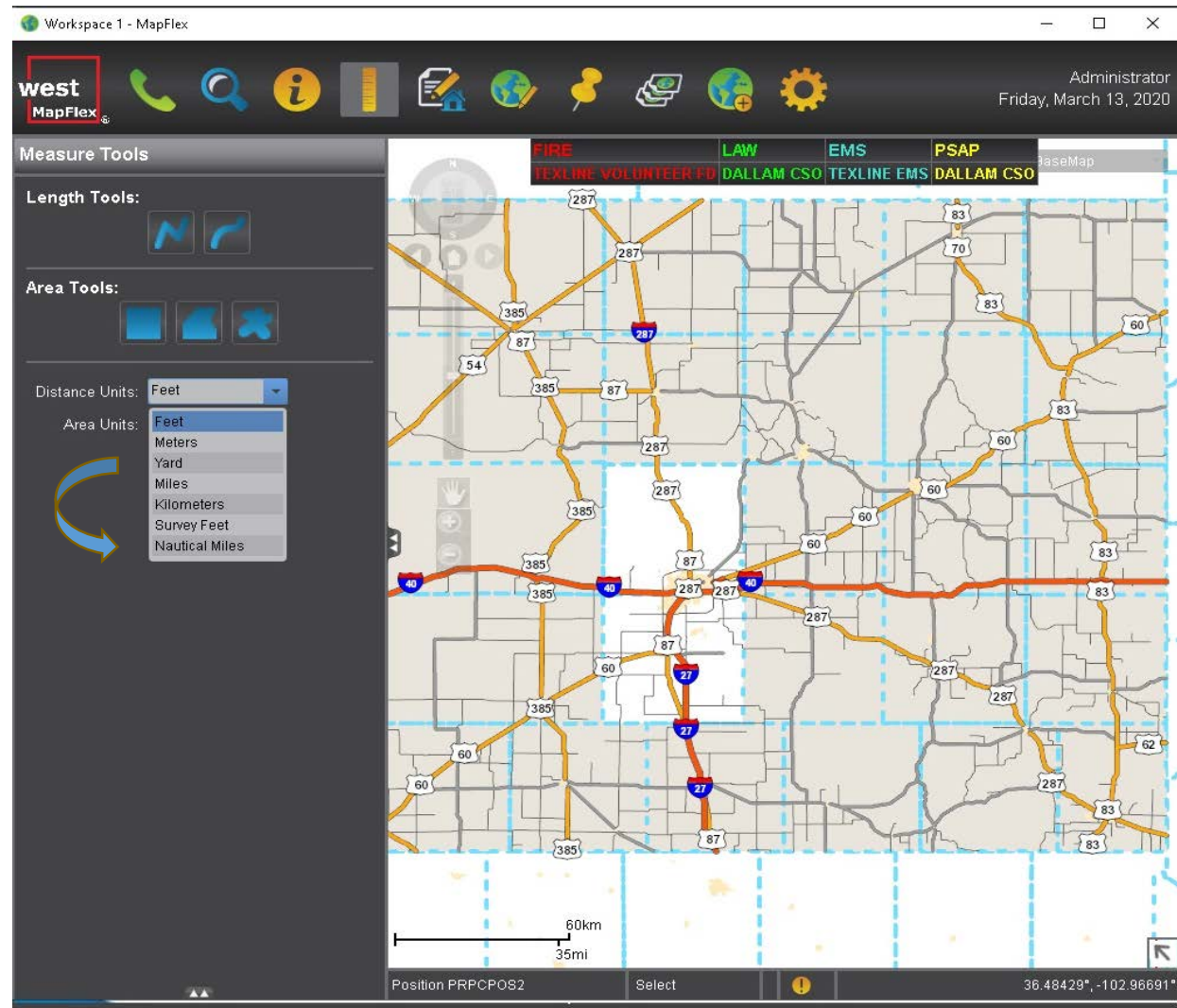
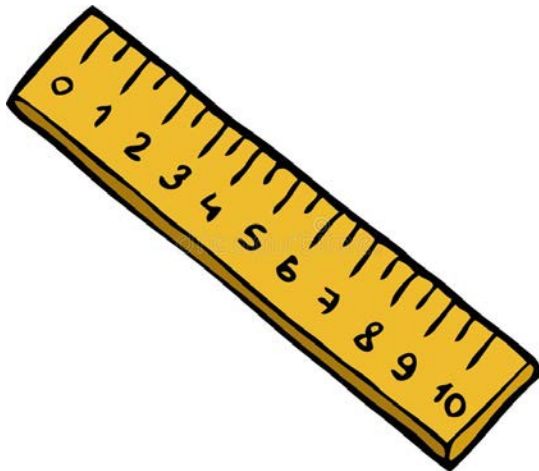
- Click on the identify tab to get information in a particular area
- You can choose anyone of the 3 shapes to draw on your map
- Once you draw your area, all the information that is stored in the map shows up in the identify details
- EX: The red circle area that was drawn produced the results in the details and as you can see landmarks, address points, etc. come up. Just click on the white triangle in front of the detail header you want and it will list the information



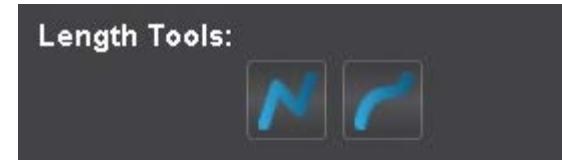
Measure



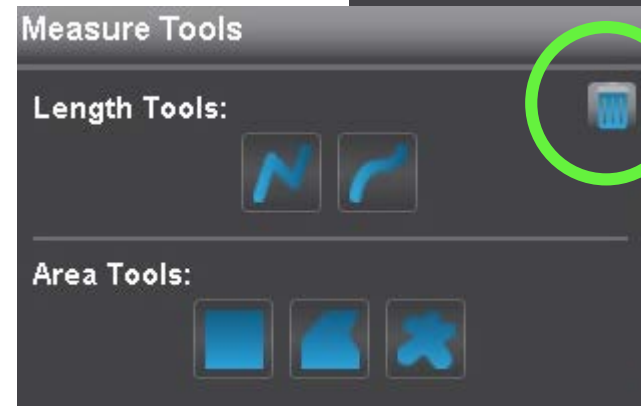
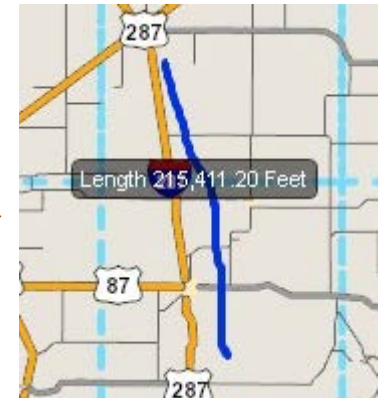
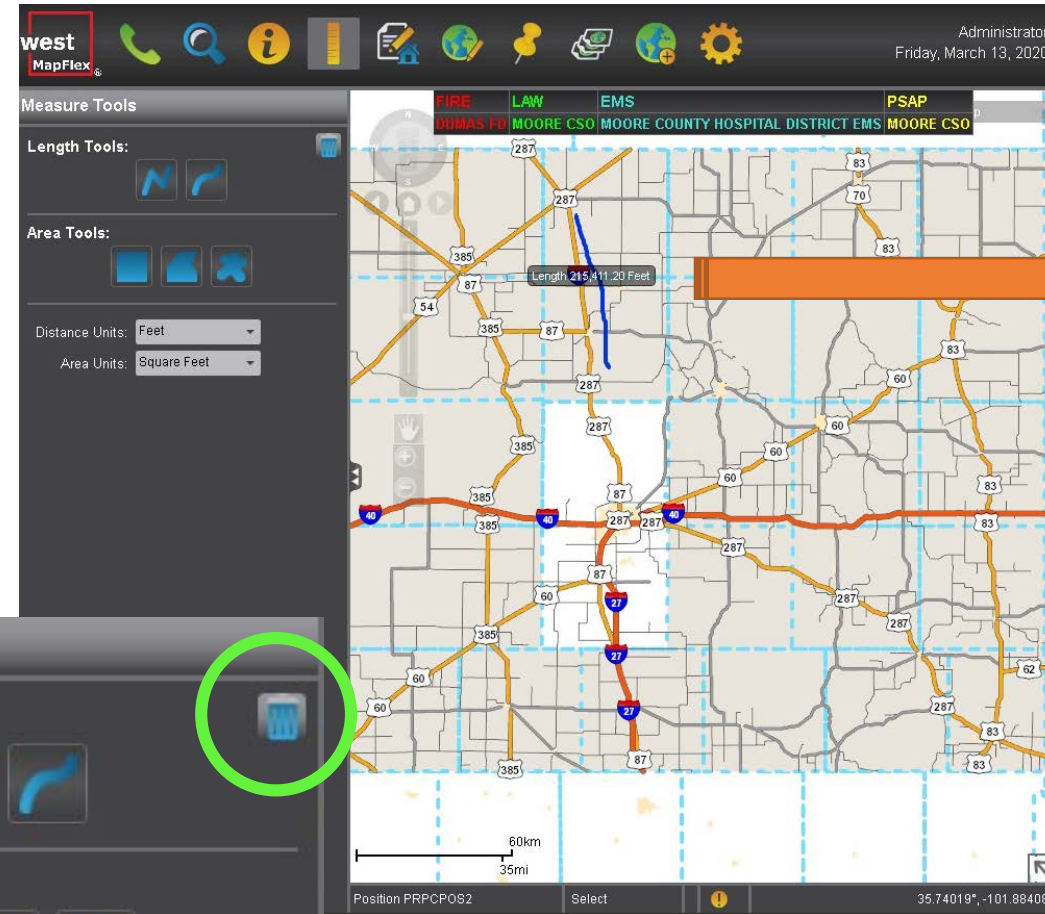
- The measure tool can be used to get length or find information in a specific area
- You can search in feet, meters, yards, miles, kilometers, survey feet or nautical miles



Measure – Length Tool



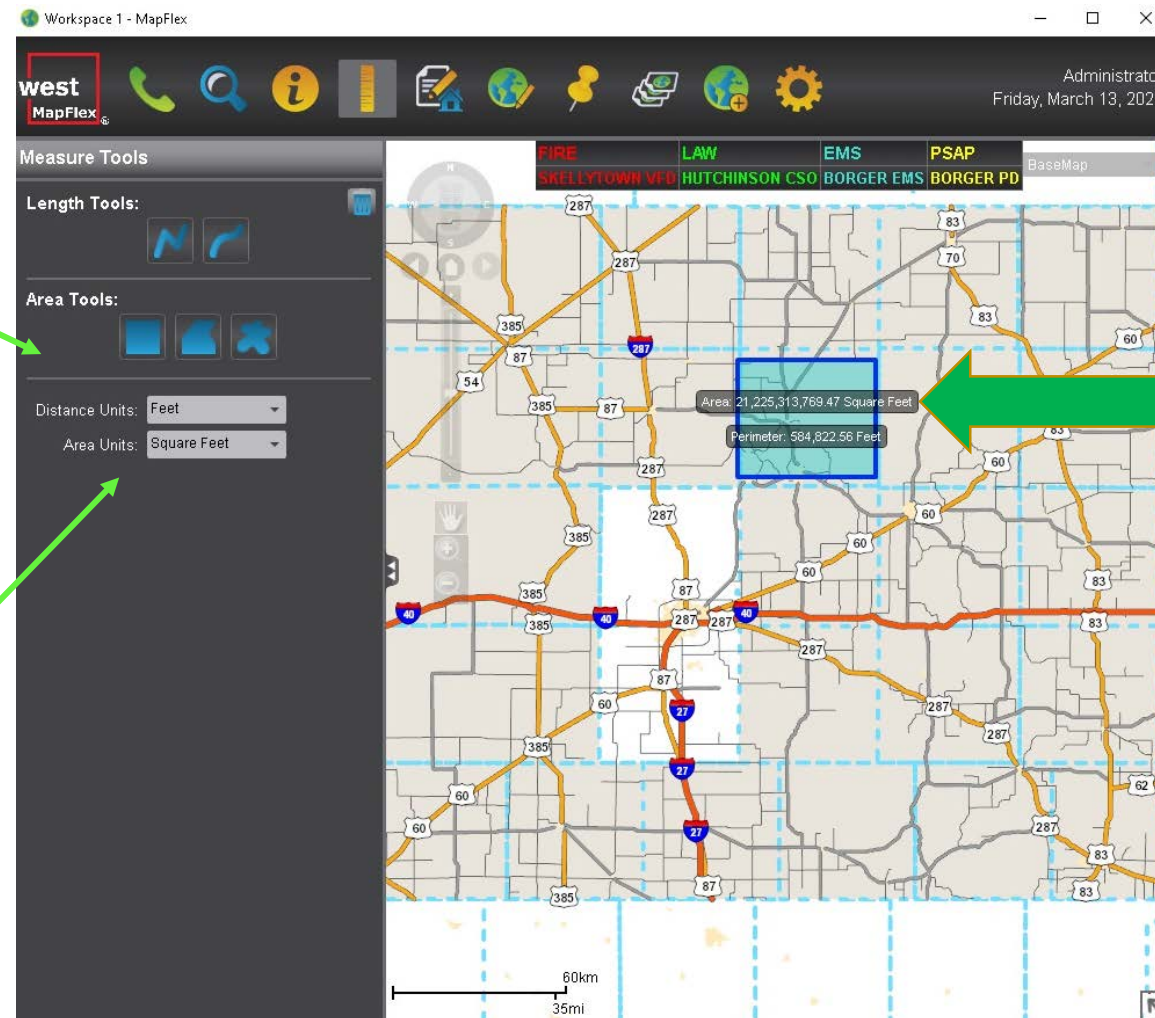
- Use the length tool to draw a line to get the distance between two points
- As you can see from my example, it doesn't have to be a straight line
- You can delete any lines or shapes you have drawn by clicking the trash can



Measure – Area Tool



- When you use the area tools, you can choose 3 different shapes
- In this example, I used a square around a certain area and it gave it to me in “Distance Units – Feet” and “Area Units – Sq Feet”



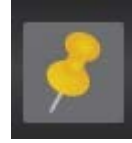
Annotation



- The annotation tool allows you to create annotations for the map, which can have data associated with them
- You can choose 3 different shapes for your annotation
- Adding an annotation will put a dot/line/polygon on the map, and when it is clicked on, will display name and comment

- You can put in the name and information and pick the color you want to use.
- You can also select a start and end time for your annotation if it just needs to be temporary

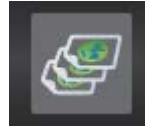
Pin Mapping



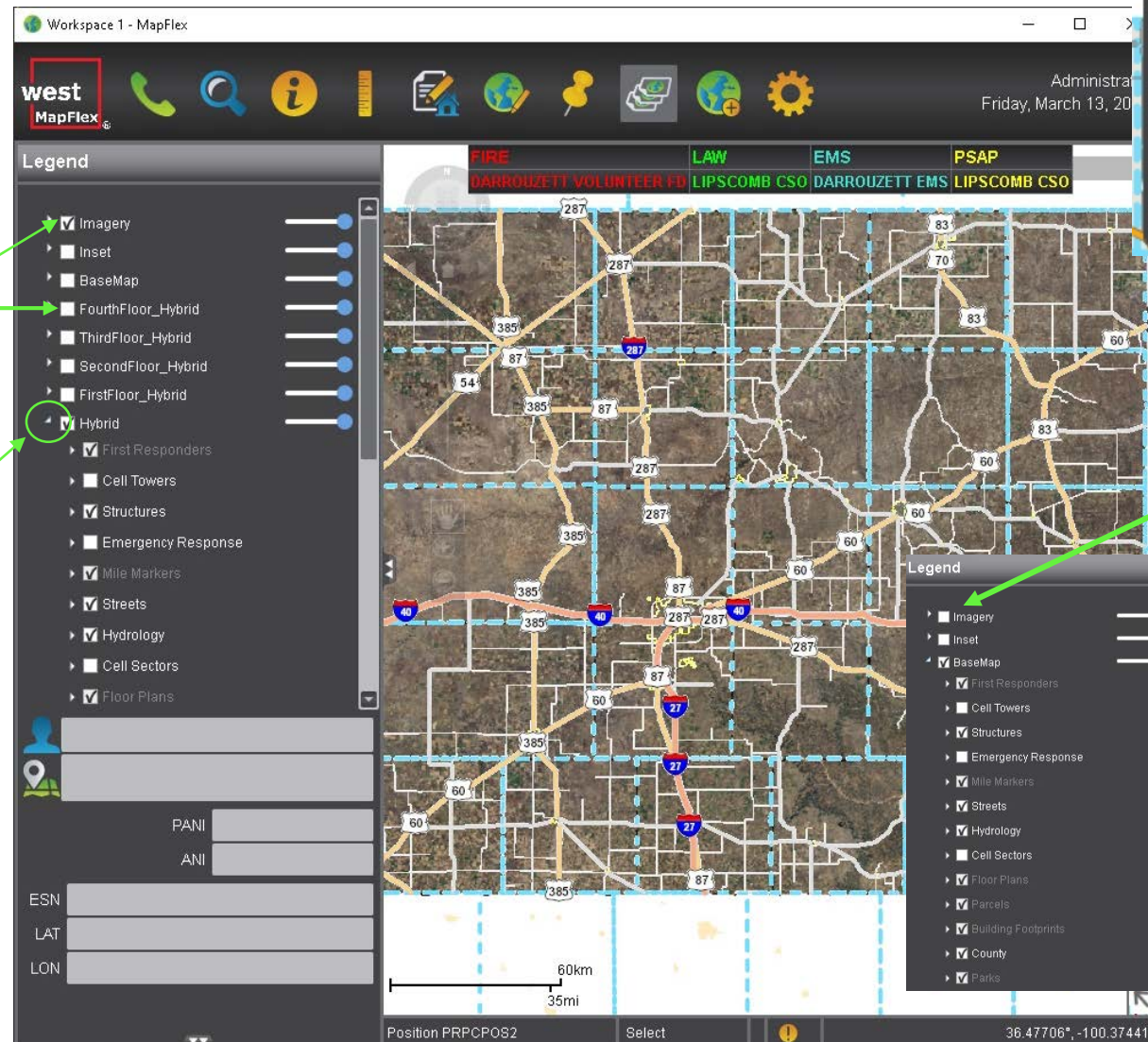
- The pin mapping tool allows for different types of notes to be displayed on the map for informational purposes
- You can choose a “type”, put the name in and then your comments
- You can also put in a start and end time
- **NOTE:** When you put comments in a pin (or annotation for that matter), make sure you keep it professional

The screenshot displays the West MapFlex software interface. At the top, there is a navigation bar with icons for phone, search, information, and other functions. The top right corner shows the user is an Administrator and the date is Friday, March 13, 2020. Below the navigation bar, there are tabs for different service areas: FIRE (DALHART VOLUNTEER FD), LAW (DALLAM CSO), EMS (DALHART EMS), and PSAP (DALLAM CSO). The main map area shows a grid of roads with various colored overlays representing service areas. On the left side, there is a 'Pin Mapping' panel. It includes a 'Pin Display' toggle set to 'OFF'. Below this, there are fields for 'Type' (set to 'Comment'), 'Name' (set to 'Comment'), 'Comment', 'Start Time', and 'End Time'. There is an 'Add' button. Below the 'Pin Mapping' panel is a 'Pin Details' section for a specific pin labeled 'DIMMITT HIGH SCHOOL' located at 'Castro CO 2, 80' with coordinates '34.54411*, -102.33242*'. At the bottom of the panel, there are fields for 'PAN', 'ANI', 'ESN', 'LAT', and 'LON'. A scale bar at the bottom of the map indicates 60km and 35mi.

Legend

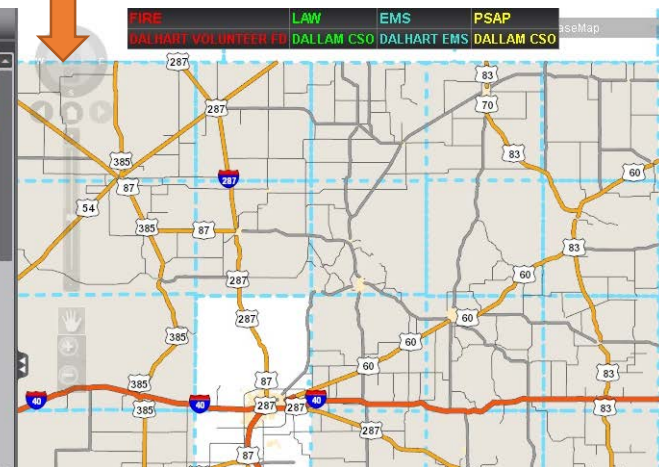


- The legend allows you to change the way the map looks
- You can add or take away the things on legend list by clicking in the white boxes
- Click on the white triangle to see more choices under each heading
- **NOTE:** It takes things longer to load when the imagery is turned on



- This drop down is located in the top right of your map and allows you to quickly change

- This is what the map looks like when the “imagery” is turned off



New Workspace

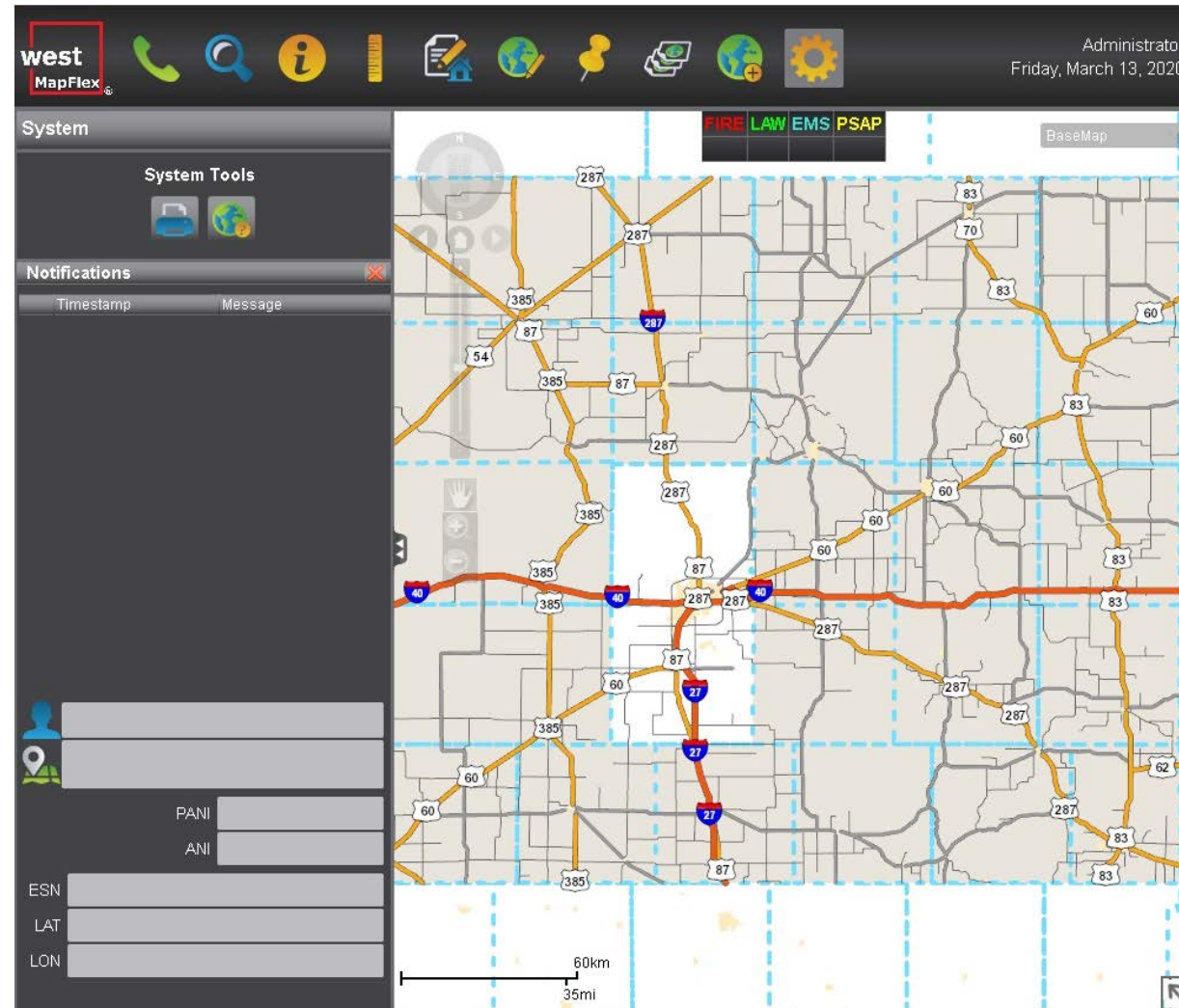


AND

System



- When you click the 'New Workspace' tab it opens another map window over your current map
- I don't know of a reason you would need to do this



- When you click the 'Settings' tab it allows you to print the map



- **NOTE:** This will only print on the PRPC printer



If you have any questions, contact:
Ami Acker at aacker@theprpc or
John Schaumburg at jschaumburg@theprpc.org